



What happens when I refer a child?

The EI Intake Coordinator will obtain information from you about the child.

The EI Intake Coordinator will talk with the parent/guardian to get permission to proceed with an intake.

When the intake is successfully completed, the family will be assigned to a Service Coordination Organization who will arrange a home visit and a multi-disciplinary evaluation (MDE).

It's all about community!

Philadelphia Infant Toddler Early Intervention

Coordinated by

Intellectual disAbility Services

701 Market Street, Suite 5200
Philadelphia, PA 19106
215-685-5900

EI Intake # 215-685-4646

EI Intake Fax # 215-685-4638

EI Intake E-mail: Birthto3EI@phila.gov



DEPARTMENT of BEHAVIORAL HEALTH
and INTELLECTUAL disABILITY SERVICES

Recovery, Resilience, Self-determination

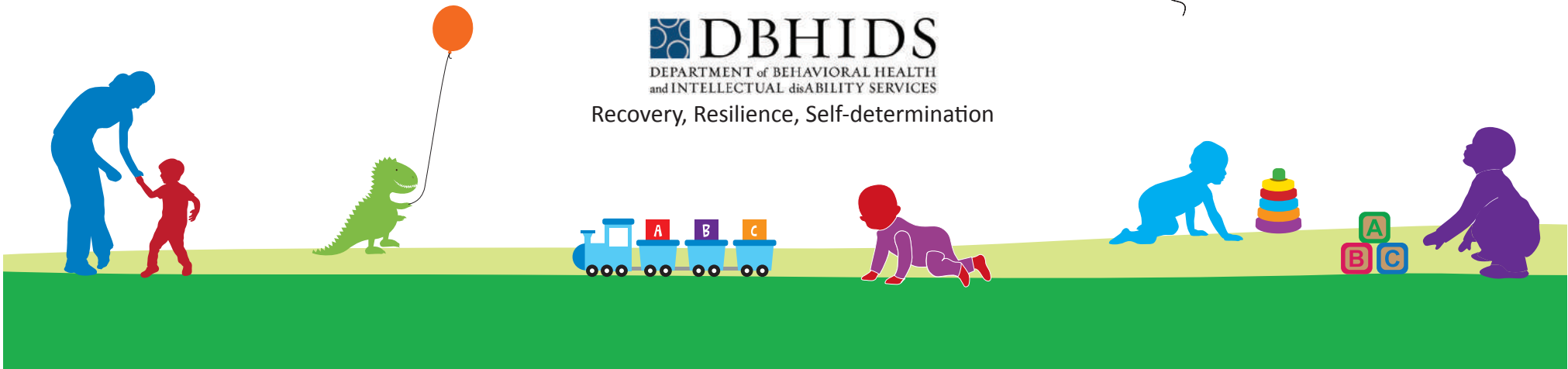
Philadelphia Infant Toddler Early Intervention

Who do I refer?

Why should I refer a child?

How do I refer a child?

What happens when I refer a child?



Who do I refer?

Children from birth to three (3) years old

Children who have a health condition or medical diagnosis that has a high probability for developmental delay

Children whose development concerns you

Children who are developing differently than other children their age

Children who are **At Risk** for developmental concerns but may not be showing signs of delay: birth weight

under 3.3 lbs,
NICU graduate,
elevated blood
lead level,
substantiated
abuse or
neglect, born
to chemically
dependent
mother,
experiencing
homelessness



PLEASE NOTE: For children who are over 36 months, call the Preschool Early Intervention Program at Elwyn SEEDS 215-222-8054



Why should I refer a child?

All children grow and develop in unique ways, however, some children need extra help to learn and develop

Early Intervention is a FREE program that can help families with their child's development, learning and behavior

Early Intervention services are delivered in the home, community or at the child's day care

Families participate in the services and learn how to help their child reach developmental outcomes

Early Intervention regularly checks the development of children who are **At Risk**



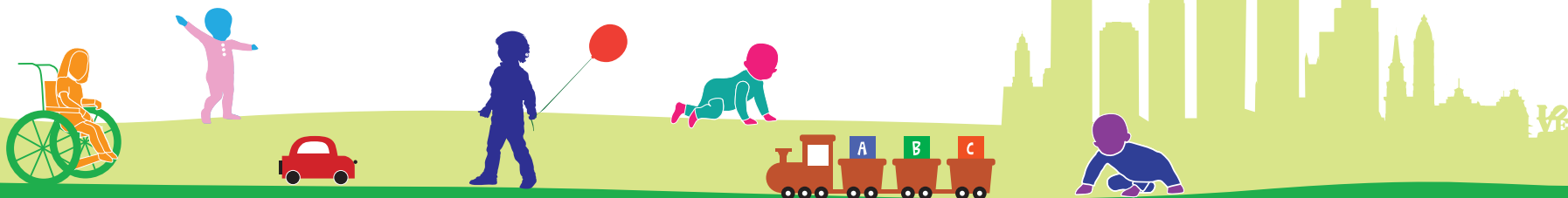
How do I refer a child?

Email: Birthto3EI@phila.gov

Fax: 215-685-4638

Call: 215-685-4646*

**Please be prepared to give us the child's name, date of birth, parent's name and phone number to begin the intake.*



Referral forms available on DBHIDS website: www.dbhids.org